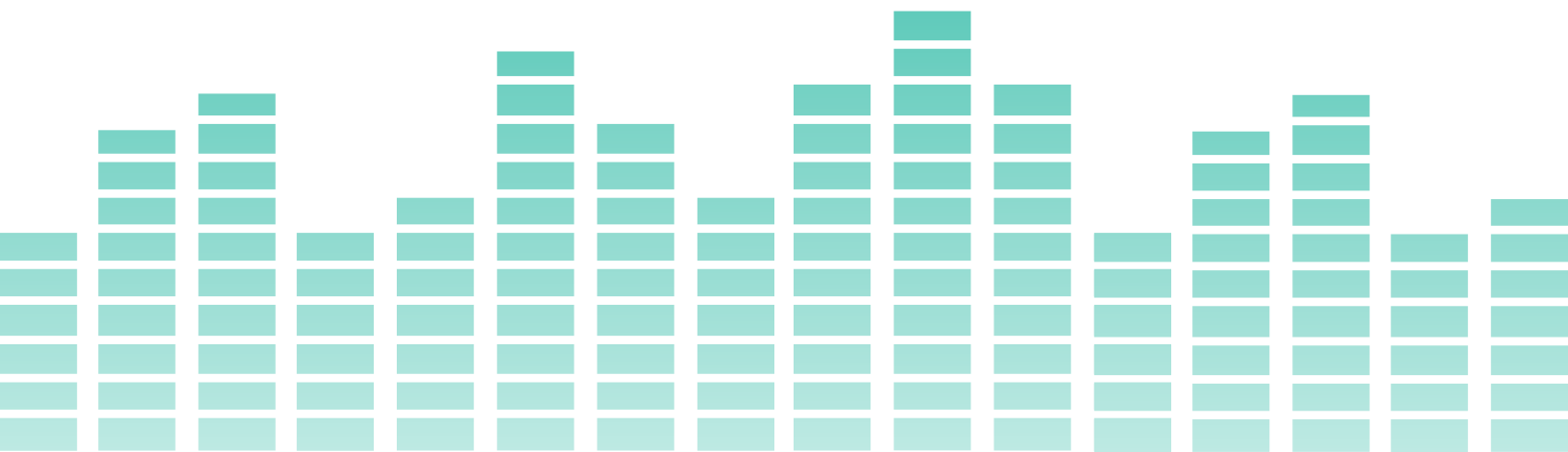


Name: OSA119S

SOUND ARTTM SPEAKER SERIES

Installation Guide & Operating Instructions



ART NEVER SOUNDED SO GOODTM

INTRODUCTION

Thank you for choosing *Bluetooth® Sound Art™* by ONSIA®. These unique flat-panel speakers, concealed in *Sound Art™* frames, have reliable, proven components and a proprietary design that will provide a truly enjoyable listening experience. *Bluetooth® Sound Art™* speakers have been designed to be compatible with *Bluetooth®* wireless technology-enabled smartphones, laptops, tablets and PCs. We've developed this installation guide to give you step-by-step pointers for a successful do-it-yourself install. Please read this installation guide & operating instructions document completely before you start.

LIMITATION OF LIABILITY

DEDICATED SOUND AND AUDIO AND ITS AFFILIATES DO NOT MAKE ANY GUARANTEES, EXPRESSED OR IMPLIED, INCLUDING MERCHANT ABILITY AND FITNESS FOR PURPOSE, WITH RESPECT TO ANY OF THESE SUGGESTIONS OR INSTRUCTIONS. DEDICATED SOUND AND AUDIO SHALL NOT BE LIABLE FOR ANY SPECIAL, INDIRECT, INCIDENTAL OR CONSEQUENTIAL DAMAGES, INCLUDING BUT NOT LIMITED TO LOSS OF PROFITS, LOSS OF USE, COST OF REPLACEMENT, BREACH OF CONTRACT, INJURY, OR ANY OTHER CAUSE WHATSOEVER EVEN IF DEDICATED SOUND AND AUDIO HAS BEEN ADVISED OF THE POSSIBILITY OF SUCH DAMAGES.

IMPORTANT SAFETY INSTRUCTIONS

General Instructions



- Read these instructions before using or installing this product.
- Keep these instructions for future reference.
- Heed all warnings in this guide.
- Follow all instructions.
- Install and operate in accordance to this document's instructions only.

Fire and Electric Shock Hazard



- DO NOT open, dismantle, disassemble or modify speaker.
- DO NOT block any ventilation openings.
- DO NOT expose to excessive cold, heat, humidity or direct sunlight.
- DO NOT push objects into holes or any openings.
- ONLY use wall charger supplied.
- Turn off power in areas you'll be drilling when installing unit to avoid electric shock.

Safety Tips When Working on a Ladder



- Place ladder in a stable position close to where you will be working. Don't reach.
- Face ladder and always have two hands on the ladder when ascending or descending.
- Don't carry items up the ladder that could cause you to lose your balance and fall. Have someone hand you items once in a stable position.

FCC STATEMENT

This equipment has been tested and found to comply with the limits for a Class-B digital device, pursuant to Part 15 of the FCC Rules. The limits are designed to provide reasonable protection against harmful interference in a residential installation. This equipment generates, uses and can radiate radio frequency energy and, if not installed and used in accordance with the instructions, may cause harmful interference to radio communication. However, there is no guarantee that harmful interference will not occur in a particular installation. If this equipment does cause harmful interference to radio or television reception, which can be determined by turning the equipment off and on, the user is encouraged to try to correct the interference by one or more of the following measures:

- Reorient or relocate the receiving antenna.
- Increase the separation between the equipment and receiver.
- Connect the equipment into an outlet on a circuit different from that to which the receiver is connected.
- Consult the dealer or an experienced radio/TV technician for help.

Caution: Any changes or modifications to this device not explicitly approved by the manufacturer could void your authority to operate this equipment.

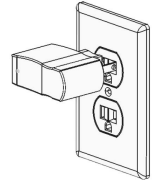
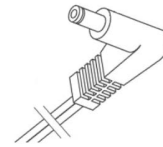
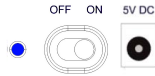
This device complies with Part 15 of the FCC Rules. Operation is subject to the following two conditions: (1) This device may not cause harmful interference, and (2) This device must accept any interference received, including interference that may cause undesired operation.

OPERATION

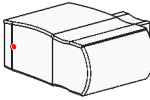
1) Charge it. Charger model SMC-4

It's recommended to charge your Onsia® Bluetooth® Sound Art™ speaker unit completely after unpacking.

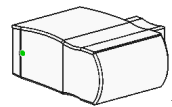
Connect the wall charger unit to an AC outlet and to the DC jack located in the back of the speaker.



A **red** LED indicator on the wall charger indicates the speaker is charging.

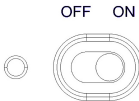


A **green** LED indicator on the wall charger indicates the speaker is fully charged and can be unplugged.

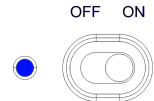


2) Power it.

Slide the switch on the back of your speaker to the "ON" position. When the speaker is powered on you will hear a series of tones indicating the unit is ready to be paired or play music.



A **blue** LED indicator located next to the DC jack will turn ON and will remain ON to indicate the unit is powered.



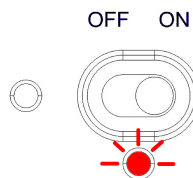
Once your speaker has foot installed, you may leave the unit ON. Your speaker will automatically enter a power saving mode when not in use.

3) Pair it. Play it. Love it!

To pair your speaker, enable Bluetooth® on your music source device and scan for Bluetooth® devices (read your device's manual or user's guide to add or setup a Bluetooth® device). **Pair your device with the Bluetooth® device named "OSA119S"**.

Bluetooth® Sound Art™ models with speakerphone feature only: When paired to a cellphone, or a device capable of receiving phone calls, you can use the speakerphone feature by selecting the speakerphone option on your device. If you are streaming music and a phone call is received, you will hear the ring tone through your Sound Art™ speaker. When the phone call is answered, the music streaming will be paused. You will then have the option of routing the call through your Sound Art™ speaker by selecting the speakerphone option on your device. Once the call is terminated, the music streaming will resume automatically.

Your Bluetooth® Sound Art™ speaker will give you many hours of enjoyable wireless play time on a single charge. When it's time to recharge, it will let you know by flashing its low battery indicator continuously.



Your Bluetooth® Sound Art™ speaker can be played and recharged at the same time.

INSTALLATION GUIDE

Recommended Tool List

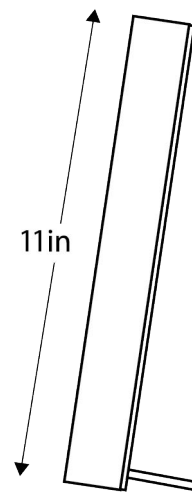
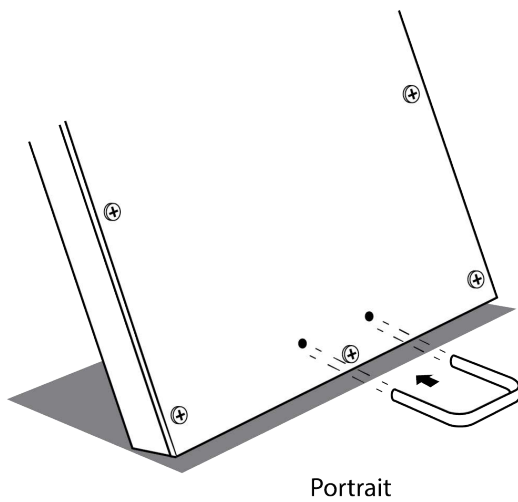
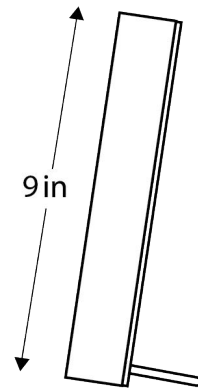
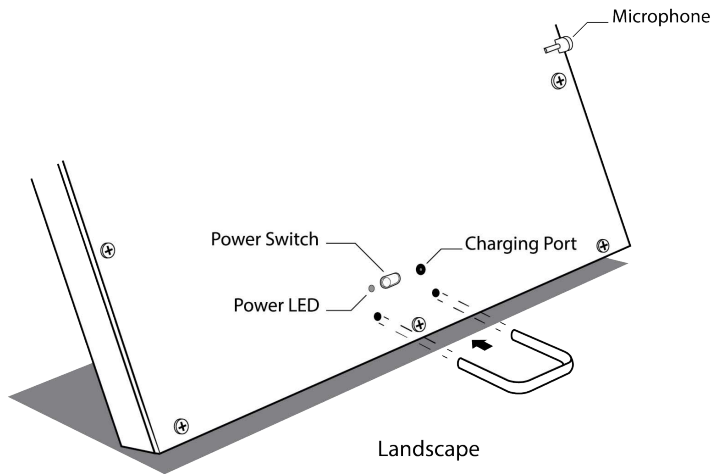
No tools required. OSA119S can be located on the desktop, table top or other flat surfaces.

Package Contents

- 1 Bluetooth® Sound Art speaker with speakerphone.
- 1 Wall Charger.
- 1 Metal Wire Foot
- 1 User's guide & operating instructions document.

Metal Foot Installation

Slide the metal wire foot into the metal wire holes on the back of the speaker. Use the holes for a vertical or a horizontal application. Apply moderate pressure until the metal wire foot is fully inserted.

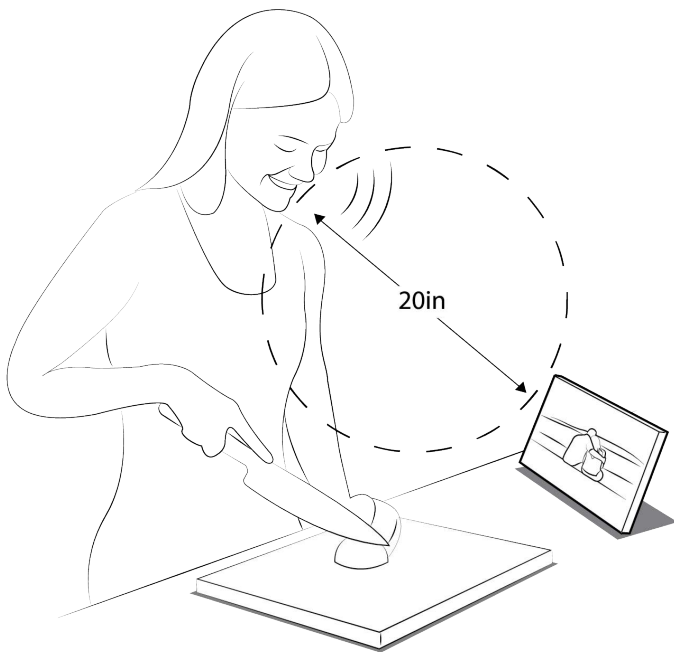


General Speaker Placement

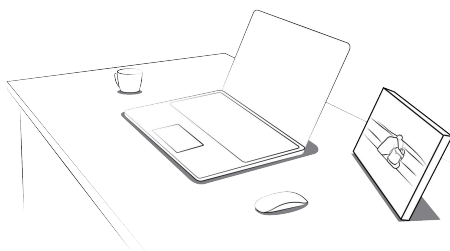
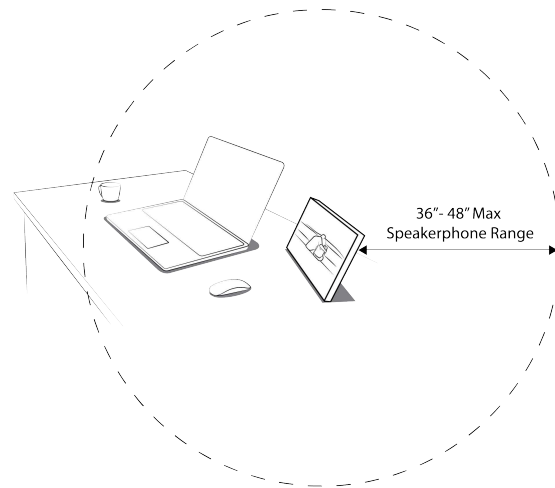
Because of the unique technology used in the design of your *Bluetooth®* Sound Art™ speaker, there is more flexibility in placing it relative to the primary listening area. In other words, the location of the speaker can be based on interior design requirements as well as acoustical considerations.

Use virtually any flat surface to set up your Onsia® Sound Art™ OSA119S Speakerphone enabled Bluetooth® Speaker. However, do not place Sound Art™ in corners, as this tends to create reverberation and sonic reflections and consider a pad under it to absorb vibration in contact with any surface.

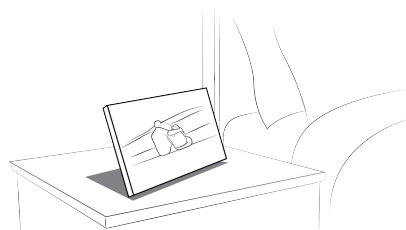
Optimum Speakerphone Range



Kitchen Counter



Desktop



Bedside Nightstand



Shelving

TROUBLESHOOTING GUIDE

If your speaker appears to have a problem, the following notes may help. If the problem still persists after having attempted to resolve it, consult your dealer for assistance or contact customer support at ONSIA® through www.onsia.com or calling customer support at: 1-800 279-7686

Symptom	Possible Cause
No sound at all	<ul style="list-style-type: none"> -Check speaker is powered ON. -Check volume and mute settings on music source device. -Check device is paired. -Recharge speaker. -Reset speaker. Slide power switch to the "OFF" position, wait one minute, then back to the "ON" position.
Unable to pair device	<ul style="list-style-type: none"> -Check speaker is powered ON. -Make sure speaker is not paired to another device. -Place music source device in direct line of sight and within 20 feet. Objects, walls, and moving persons may reduce wireless operating range. -Reset speaker. Slide power switch to the "OFF" position, wait one minute, then back to the "ON" position.
Music breaks, device disconnects	<ul style="list-style-type: none"> -Place music source device in direct line of sight and within 20 feet. Objects, walls, and moving persons may reduce wireless operating range. -If using a streaming music service, try playing music stored in music source device instead.
Distortion at high volume levels	<ul style="list-style-type: none"> -Check the recording quality of the music material. -Recharge speaker if LED power indicator is flashing.

SPECIFICATIONS

Battery Life: 6-8 hours (50% volume level). Will vary depending on audio content.

Standby Time: 30 days

Charging Time: 3.5 hours

Audio Output Power: 3W (10% THD), 2W (1% THD).

Frequency Range: 65Hz to 6kHz

Speakerphone mic sensitivity: -42dB

Speakerphone mic distance max range: 1-1.5 meters (1-1.5 yards)

Optimum microphone distance: 500mm (20 inches)

Loudspeaker Design: Distributed Mode

Sound Dispersion Angle: 170°

Bluetooth Version: 4.0

Maximum Wireless Range: 33 feet under ideal conditions (direct line of sight)

Battery: Li-Ion

Wall Charger: Input - 100V to 240V AC 50/60Hz 1.0A max

Output - 5V DC 1000mA

Automatic shutdown and charge status LED indicator

PRODUCT CARE

Do not use any solvents or liquids to clean your *Bluetooth®* Sound Art™ speaker. Simply dust unit with a dry piece of cloth.

WARRANTY INFORMATION

Onsia® warrants its *Bluetooth®* Sound Art™ speaker products to be free from defects in material and workmanship for one year from the date of purchase. This product contains no user serviceable parts. *DO NOT attempt to open, dismantle, disassemble or modify the unit; doing so will void its warranty.* Except where prohibited by applicable law, this warranty is nontransferable and is limited to the original purchaser. This warranty gives you specific legal rights and you may also have other rights that vary under local laws.

In the event of a defect, Onsia® will, at its option, repair or replace the product with no charge to the purchaser for parts or labor. The repaired or replaced product will be warranted for 90 days from the date of return shipment or for the balance of the original warranty, whichever is longer.

To obtain warranty service, the purchaser must call ONSIA® at 1 (800) 279-7686. To obtain a return authorization, the purchaser must provide a copy of the original sales receipt. The purchaser must return the product postpaid with the purchaser's return address and the return authorization information clearly printed on the outside of the package to the Authorized ONSIA® Service Center provided. Onsia® will not be responsible for any losses or damage to the product incurred while the product is in transit or is being shipped for repair. Insurance is highly recommended.



www.onsia.com

©2016 Dedicated Sound and Audio, Inc. All rights reserved. The ONSIA® logo, ONSIA®, Art Never Sounded So Good™, Sound Art™, and Your Wall. Your Sound. Your Art.™ are trademarks owned by Dedicated Sound and Audio, Inc. The Bluetooth® word mark and logos are registered trademarks owned by Bluetooth SIG, Inc. and any use of such marks by Dedicated Sound and Audio, Inc. is under license.